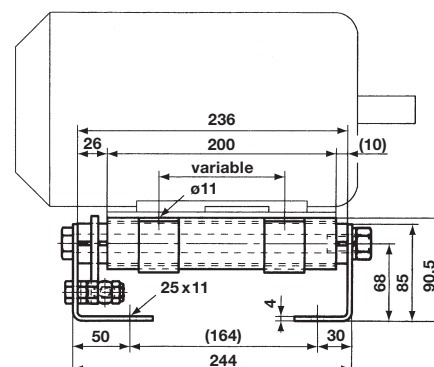
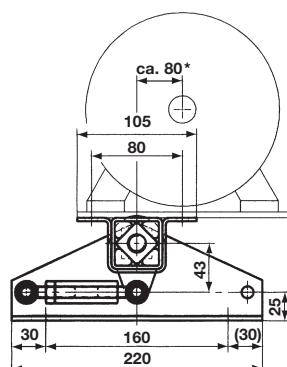




Motorbase

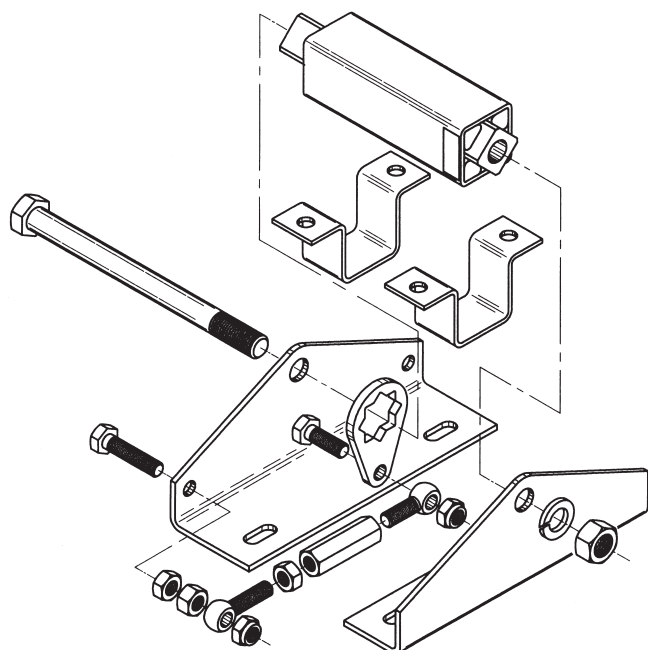
Type MB 27

**Selection of base dimension:
according to relevant motor
frame size**



Art. No.	Motorbase Type	Frame size	1000 min ⁻¹ kW	1500 min ⁻¹ kW	3000 min ⁻¹ kW	Weight in kg
13 000 210	MB 27 x 80	D 90S/L	0.75 – 1.1	1.1 – 1.5	1.5 – 2.2	3.88
13 000 211	MB 27 x 120	D 100L	1.5	2.2 – 3.0	3.0	3.92
13 000 212	MB 27 x 200	D 112M	2.2	4.0	4.0	4.00

* The motor plate, which has to be added by the customer, should be installed off-center in order to provide the best possible lever motion; we recommend an off-center shifting of approx. 80 mm for all three types MB 27.



The drawing on the left shows the construction of the ROSTA Motorbase MB 27. Contrary to the large type MB 50 and MB 70, the MB 27 Motorbase is delivered completely assembled, but without motor plate.

The outer dimension is the same for all three base sizes. The rubber suspension units of the MB 27x 80 and MB 27x 120 types are divided into two sections, but assembled in a common housing.