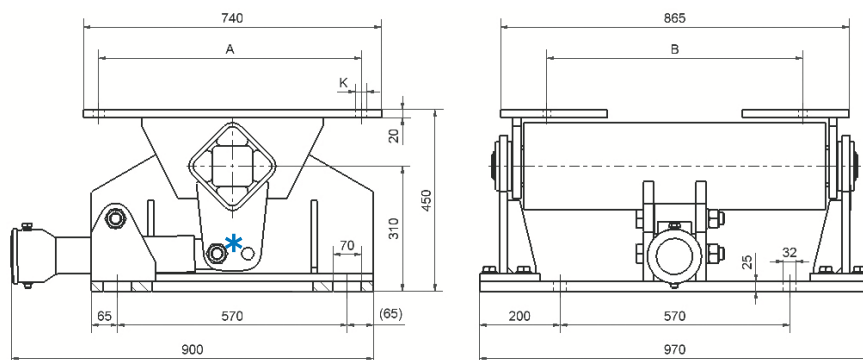




## Motorbase Type MB 100

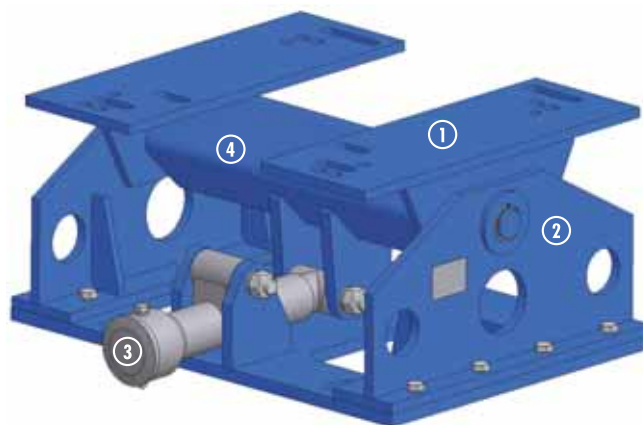


Art. No.	Type	Motor Frame Size	P [kW] 3000 min <sup>-1</sup>	P [kW] 1500 min <sup>-1</sup>	P [kW] 1000 min <sup>-1</sup>	A	B	K	Weight [kg]
02 200 900	MB 100×750	315M	132–160	132–160	90 / 110	508	457	Ø28	490
		315L	160–200	160–200	110–160	508	508	Ø28	
		355S	200–250	200–250	132–160	610	500	Ø28	
		355M	250	250	200–250	610	560	Ø28	
		355L	250	250	200–250	610	630	Ø28	

Details regarding special designs, see pages 106/107.




\* For possibly required longer tensioning travel of the motor L-supports, the pretensioning device (3) shall be bolted into the front holes of the fork-head on the rubber suspension element.

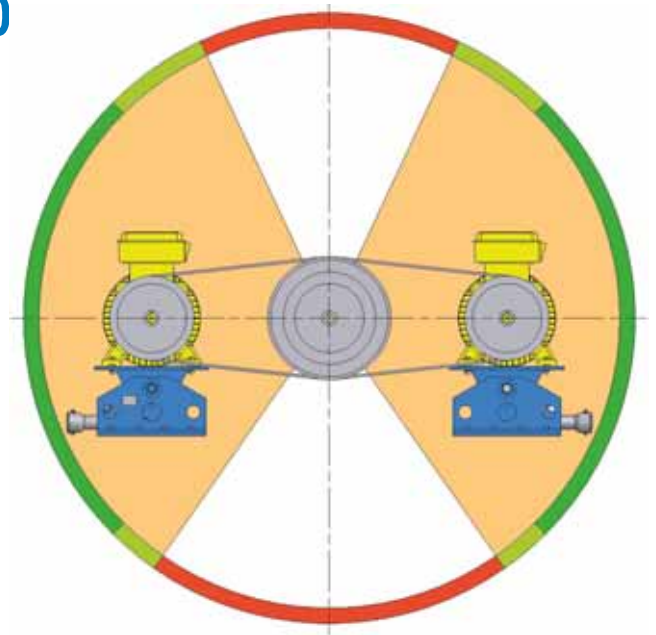
- 1 Motor L-supports
- 2 Side supports
- 3 Pretensioning device
- 4 Rubber suspension element



# Mounting instructions for MB 100

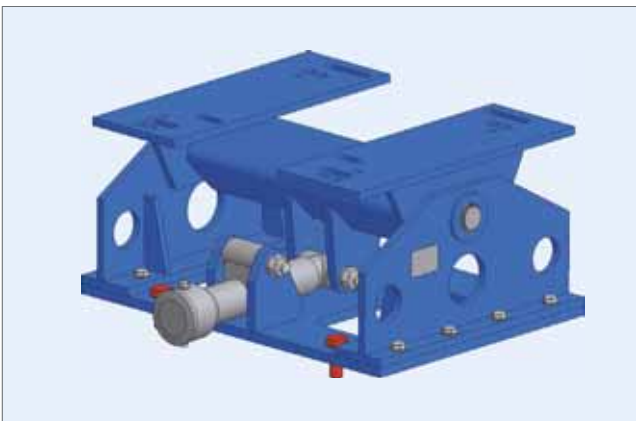
## 1 Ascertainment of the ideal motorbase position

-  longest tensioning travel, ideal position of the MB
-  sufficient travel of the MB
-  in this position, insufficient travel is given (contact **ROSTA**)



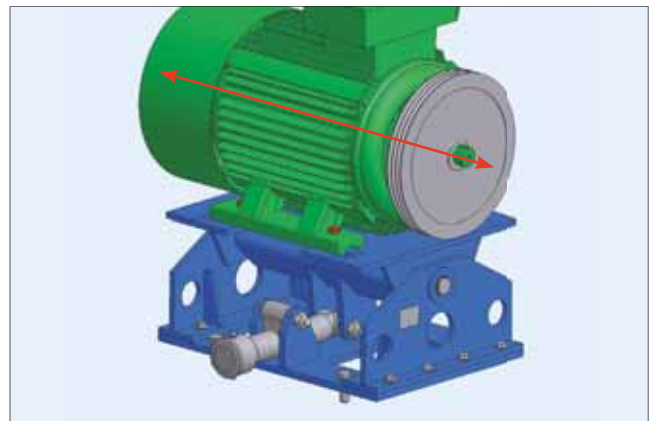
## 2 Support fixation

4 oblong holes 32×70 mm



## 3 Alignment of pulleys and motor fixation

4 screws according relevant motor size



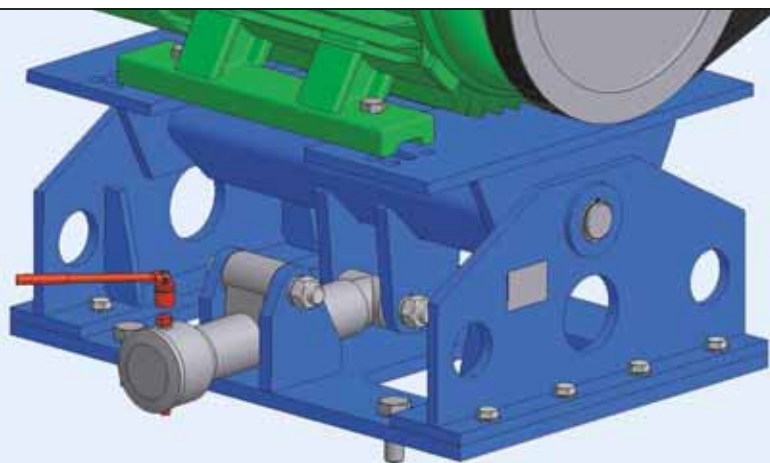
## 4 Insert and tension the belts, control belt test force

Tensioning of the belts according to belt suppliers recommended test force (table on page 97).

Adjust tension with 24 mm hook wrench



Do not use compressed-air power tools for tensioning!



### Retension:

Generally retensioning is not necessary, however, we recommend to control the belt tension after a few days of operation (after "running-in" of the belts).